

DEVELON

Wheel Loader

DL420-7



Engine

Make	DEVELON
Model	Scania DC13
Number of cylinders	6
Displacement	12700 cm ³
Max. power (SAE J1995)	257 kW/345 hp @ 1800 rpm
Max. torque (SAE J1995)	2196 N·m @ 1100 rpm
Bore × stroke	130 mm × 160 mm
Starter	24 V / 6 kW
Batteries - Alternator	2 × 12 V, 200 Ah - 28 V, 100 A
Air filter	Centrifugal pre-cleaner Top Spin™ Donaldson® with 2-stage dry filter
Cooling	Cooling package with automatic reversing fan to facilitate radiator cleaning. Automatic rotation speed adjustment according to temperature conditions.
Radiator	Wide fin radiator - Intercooler/Hydraulic oil cooler/Transmission oil cooler + A/C condenser

Transmission

Type	5-speed auto-powershift with lock-up
Torque converter	Single stage / mono phase / fixed wheel stator
Speeds - forward 1 / 2 / 3 / 4 / 5	7.2 / 13.6 / 19.7 / 38.3 / 40
Speeds - reverse 1 / 2 / 3	7.2 / 13.6 / 19.7
Maximum traction	22.4 ton
Maximum gradeability	51% (27°)

Axles

LSD lock ratio	30% (front & rear)
HDL lock ratio	100% (front)
Oscillation angle	+/- 12°
Tire size - standard	26.5R25

Brakes

Braking distance	12.3 at 34.9 km/h
------------------	-------------------

Hydraulic System

Type	Load sensing - closed center hydraulic system
Main pump	Dual variable displacement axial pistons pumps
Maximum flow	266 l/min
Maximum pressure	315 bar
EMCV	Automatic functions for positioning the bucket ready to dig and a function for stopping the lift arm at the desired height.
Filtration	In the oil return to the tank, the fiber-glass filter has a filtering capability of 10 micron.

Hydraulic Cylinders

Cylinders	Quantity	Bore × rod diameter × stroke (mm)
Lift	2	150 × 95 × 795
Bucket	1	160 × 100 × 615

Lift Arm

Load cycle	
Lift arm - up	6 s
Lift arm - down	2.7 s
Bucket - dump	2 s

CAB

Safety standards	ROPS ISO 3471:2008 FOPS ISO 3449
Noise emissions	
Operator Sound Pressure Level (ISO 6396)	71 dB
Exterior Sound Power Level (ISO 6395)	107 dB

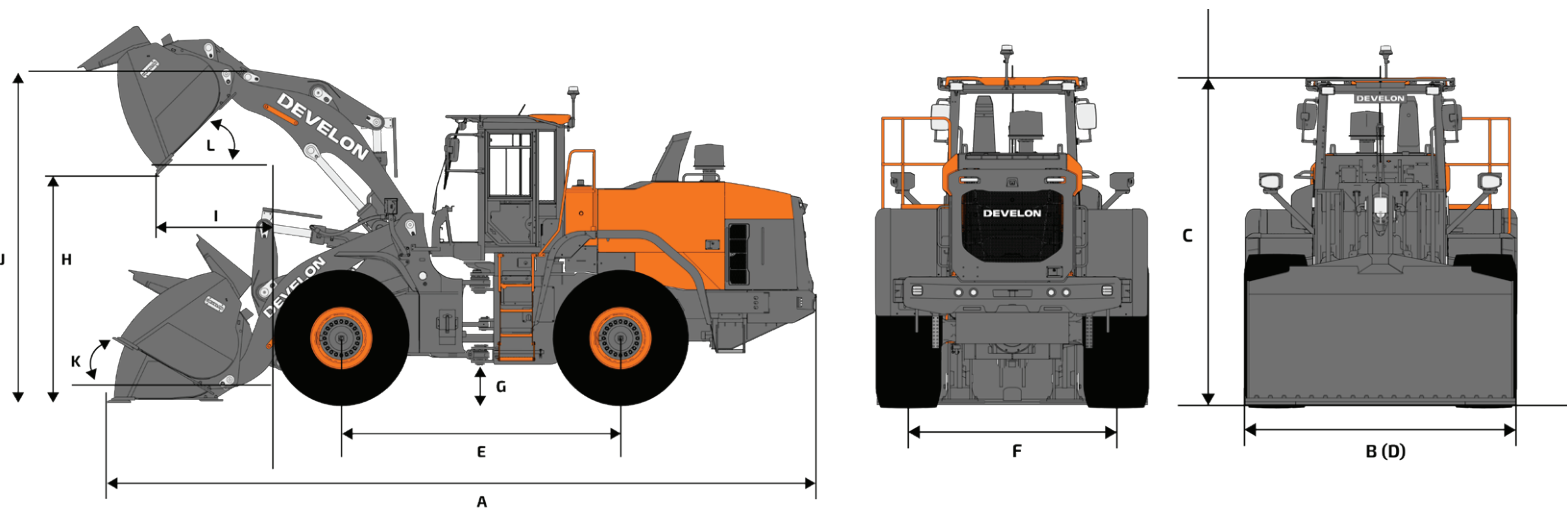
Fluid Capacities

Fuel tank	313 l
DEF (AdBlue®) tank	60 l
Cooling system (radiator)	55 l
Engine oil	45 l
Front axle	42 l
Rear axle	42 l
Hydraulic system	223 l
Hydraulic oil tank	125 l
Transmission oil	55 l

Dimensions

Pin-On		Unit	Performance bucket				Eco bucket		High lift
			General purpose		Material handling		General purpose		
Ground engaging tools			4.5 m ³ BOCE	4.4 m ³ BOT	4.9 m ³ BOCE	4.7 m ³ BOT	4.3 m ³ BOT	4.5 m ³ BOCE	
Configuration		straight sides	straight sides	convex sides	convex sides	straight sides	straight sides		
	Capacity heaped ISO/SAE	m ³	4.5	4.4	4.9	4.7	4.3	4.5	=
	Capacity at 110% fill factor	m ³	4.9	4.8	5.3	5.2	4.8	5.0	=
B	Bucket width	mm	3000	3000	3000	3000	3200	3200	-5
	Breakout force	kN	167	173	167	172	183	171	=
	Static tipping load (straight)	kg	19287	19347	19250	19310	19351	18696	-2838
	Static tipping load (full turn - 40°)	kg	17273	17334	17235	17295	17071	16493	-2591
H	Dump height (at 45° - fully raised)	mm	2911	2719	2911	2719	2835	2990	+483
I	Dump reach (at 45° - fully raised)	mm	1342	1503	1342	1503	1465	1320	+72
	Digging depth	mm	145	165	145	165	110	115	+119
J	Height at bucket pivot point	mm	4265	4265	4265	4265	4265	4265	+480
	Max. tilt angle in carry position	°	50	50	50	50	48	48	+4
	Max. tilt angle fully raised	°	63	63	63	63	62	62	+1
K	Max. tilt angle on ground	°	44	45	44	45	43	43	+1
	Max. tilt angle at max. reach	°	59	59	59	59	59	59	=
	Max. dump angle at max. reach	°	72	72	72	72	71	71	-10
	Max. dump angle on ground	°	64	64	64	64	65	65	-1
L	Max. dump angle fully raised	°	46	46	46	46	45	45	-1
	External radius - tire side	mm	6388	6388	6388	6388	6388	6388	=
	External radius - bucket edge	mm	7028	7146	7028	7146	7065	7000	+212
E	Wheel base	mm	3525	3525	3525	3525	3525	3525	=
D	Width at tires edge	mm	2982	2982	2982	2982	2982	2982	=
F	Tread	mm	2300	2300	2300	2300	2300	2300	=
G	Ground clearance (at 12° osc.)	mm	495	495	495	495	495	495	=
A	Overall length	mm	9244	9510	9244	9510	9138	8926	+471
C	Overall height	mm	3660	3660	3660	3660	3660	3660	=
	Operating weight	kg	23437	23373	23494	23430	23419	23570	+585

All capacities according ISO 7546, with straight blade (measure at the tip of bucket teeth or cutting edge), tires 26.5 R25 (L3), base EU configuration.



Standard & Optional Equipment

■ Standard ● Optional

Engine

Exhaust aftertreatment (DOC + DPF + SCR)	■
Auto idle function	■
Auto shutdown function	■
Variable Geometric Turbocharger (VGT)	■
Air pre-cleaner (centrifugal)	■
Situation Awareness Technology 2	■
Fan – reversible, variable speed, with automatic function	■
Wide fin radiators	■

Powertrain

5-gear powershift transmission	■
Torque converter with Lock-up	■
Transmission mode management	■
I.C.C.O. (Intelligent Clutch Cut-Off)	■
Axle differential – Hydraulic Differential Lock (HDL)	■
Axle differential – Limited Slip Differential (LSD)	●
Axles oil cooler	●

Hydraulic

Load sensing hydraulic system, variable displacement pump	■
EMCV (Electric main control valve)	■
3rd spool valve	■

Lift Arm

Standard lift arm, Z-bar kinematic	■
Hydraulic lift arm suspension – Load Isolation System (LIS)	■
Smooth end position bucket & arm	■
Position memories	■
Automatic bucket position "return to dig"	■
High lift arm, Z-bar kinematic	●

Cab & Operator comfort

ROPS (ISO 3471:2008)/FOPS (ISO 3449) pressurized cab	■
Grammer seat with vertical and horizontal low-frequency suspension, pneumatic lumbar support, heating, 3-point safety belt	■
Joystick lever with FNR and thumbwheel roller integrated to the seat's right armrest	■
Electric joystick steering on left armrest	■
DEVELON Smart Key	■
Door remote opening	■
DEVELON Smart Touch – 8" touch screen, all-in-one	■
DEVELON Smart Guidance System	■
Rear-view mirrors – heated	■
MyDEVELON Fleet Management Web (telematic system)	■
12V socket	■
USB socket	■
Fingertip control	●
Rear-view mirrors – heated, electric adjustment	●
Grammer seat with vertical and horizontal low-frequency suspension, pneumatic lumbar support, heating and ventilation, 3-point safety belt	●

Safety

Safety belt alarm	■
Rear-view camera	■
Full handrails and maintenance platforms	■
Strobe reversing light	■
LED working lights on cab (4× front + 4× rear)	■
LED working lights on cab (6× front + 6× rear)	●
DEVELON Transparent Bucket	●
DEVELON Smart View	●

Other

Automatic lubrication system	■
26.5R25 (L3)	■
26.5R25 (L4)	●
26.5R25 (L5)	●
775/65 R29	●
Additional counterweight	●
DEVELON Smart Load	●

List of Attachments*

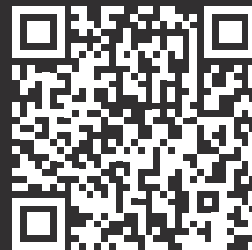
Eco. general purpose bucket - 4.3 m ³ , with teeth, for direct mount, width 3.20 m	●
Eco. general purpose bucket - 4.5 m ³ , bolt-on edge, for direct mount, width 3.20 m	●
Performance general purpose bucket - 4.0 m ³ , one strip teeth ITR, for direct mount, width 2.995 m	●
Performance general purpose bucket - 4.1 m ³ , bolt-on edge, for direct mount, width 2.995 m	●
Performance general purpose bucket - 4.4 m ³ , one strip teeth ITR, for direct mount, width 2.995 m	●
Performance general purpose bucket - 4.5 m ³ , bolt-on edge, for direct mount, width 2.995 m	●
Performance general purpose bucket - 4.4 m ³ , one strip teeth ITR, for direct mount, width 3.20 m	●
Performance general purpose bucket - 4.5 m ³ , bolt-on edge, for direct mount, width 3.20 m	●
Performance general purpose bucket - 4.1 m ³ , bolt-on edge, for ISO quick coupler, width 2.995 m	●
Performance general purpose bucket - 4.1 m ³ , bolt-on edge, for ISO quick coupler, width 3.20 m	●
Quick coupler, ISO	●
Quick coupler, LARGE	●
Pallet forks - 7 t (FEM class 4), 1.5 m, for ISO quick coupler	●
Pallet forks - 9 t (FEM class 4), 1.5 m, for ISO quick coupler	●
Pallet forks - 9 t (FEM class 4), 1.5 m, for LARGE quick coupler	●

*Visit our [WHEEL LOADER BUCKET CONFIGURATOR](#) to customize your bucket for your application

Certain specification(s) are based on engineering calculations and are not actual measurements. Specification(s) are provided for comparison purposes only and are subject to change without notice. Specification(s) for your individual DEVELON equipment will vary based on normal variations in design, manufacturing, operating conditions, and other factors. Pictures of DEVELON units may show other than standard equipment.

Powered by Innovation

DISCOVER MORE:
DL420-7



DEVELON

A brand of HD Hyundai Infracore.

HD Hyundai Infracore Europe s.r.o.
IBC - Pobrezni 620/3,
18600 Praha 8 - Karlin, Czechia

©2025 HD Hyundai Infracore. All rights reserved.
SPDL00007 (06/2025)